

BERTI

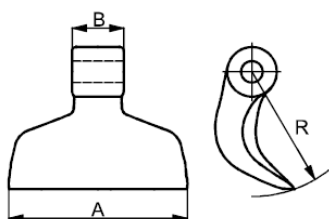
NR. REF.

RYS.

WYMIARY

ŚR. OTW. WAGA

Mazza 06/16



A = 137
B = 40
R = 95

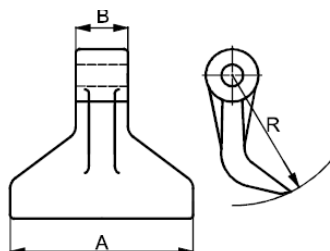
—

16,5

1600

—

Mazza 30/16



A = 140
B = 40
R = 100

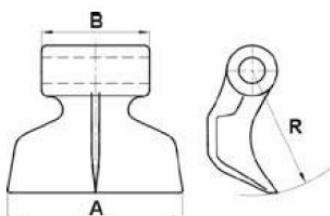
—

16,5

1220

—

Mazza 58/20



A = 138
B = 86
R = 99

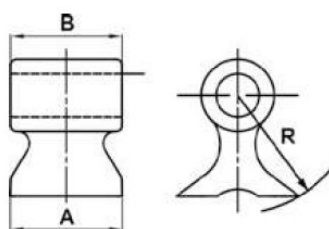
—

20,5

2300

—

Mazza 83/31



A = 70
B = 80
R = 85

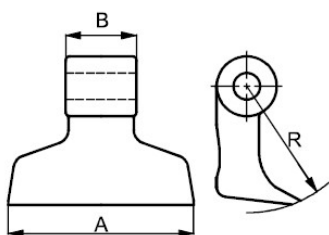
—

31

1900

—

Mazza 84/19



A = 136
B = 52
R = 93

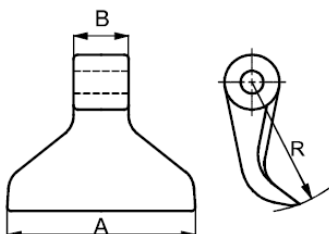
—

19,5

1880

—

Mazza 91/16



A = 138
B = 40
R = 95

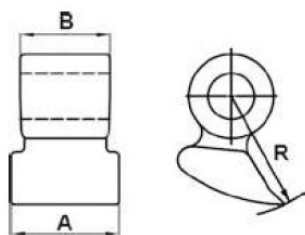
—

16,5

1800

—

Mazza 102/30



A = 71
B = 60
R = 80

—

30,5

1760

—